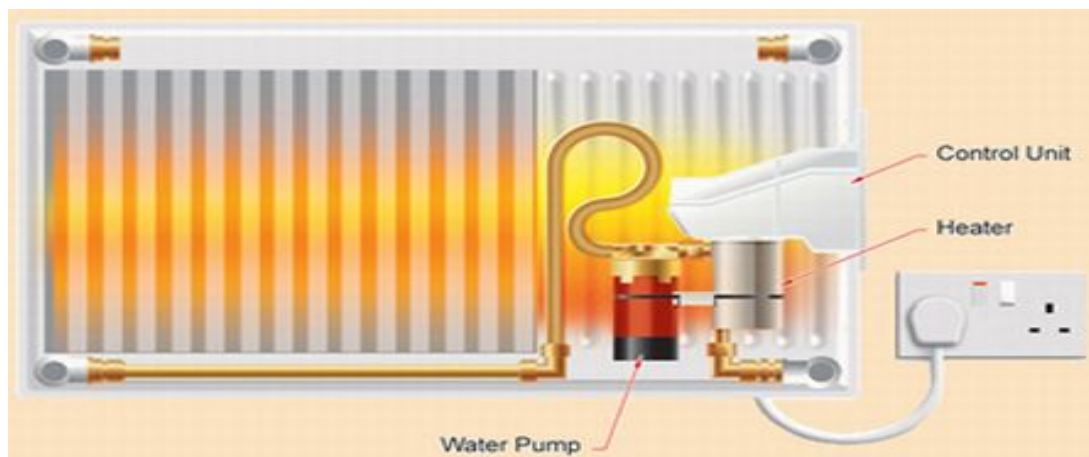


Premium LST - Water Filled Radiators

The Premium Low Surface Temperature (LST) Electric Radiators have the optimum controllability like the standard Independent Water Filled Electric Radiator models, but also have a low surface temperature outer skin.

LST radiator products are ideal for use as safe heating in Hospitals, Care Homes, Schools, Surgeries, Nurseries, or wherever vulnerable persons are involved.



Simply wall mount with the supplied brackets, plug - in to a standard 13 amp socket, and switch on. Each double panelled unit contains its own miniature flow heating boiler - which circulates water around the unit, emitting a combination of radiant and convected heat.

The heat combination ensures the whole room area is heated gently, and creates comfortable warmth, without over drying the air. There are no exposed to air elements. This feature gives you added heating comfort and user safety.

Radiators are efficient and economical to use, giving off constant and smooth warmth. A typical working pattern is a 5 minutes 'on', and 3 minutes 'off' cycle. Radiators are pre - filled with anti - corrosion treated fluid. No maintenance. 24 months warranty.

Controls & cable are on the right hand side, when the radiator is mounted on the wall.

Radio Frequency Control (RFC)



The radio frequency program controller is used with the LST models, and provides a **wireless wall mounted 7-day / 24hr digital timer thermostat**, which ensures the maximum level of energy efficient heating.

Battery operated – no wall wiring is required.

More than one controller within an area gives you ‘zoned’ heating. Battery powered with radio operation, so no wiring, and can control up to 7 radiators as a group for temperature and timing. Heating can be easily programmed for your COMFORT temperature times. An energy saving ECO LOWER ‘set back’ temperature setting is also provided to use when the room is unoccupied, or at night times. This allows stops the rooms or property completely cooling out, allowing a more efficient and quicker warm up time back to the ‘comfort’ setting when it is required.

Single Item Prices – Quantity Discount applies to Multiple Orders

Model	Height	Width	Weight	Amps	Input kW	Output kW	Price exc VAT
EH7050LST	700	500	29	4.0	0.9	0.383	£490.00
EH7070LST	700	700	35	4.0	0.9	0.790	£506.00
EH7100LST	700	900	47	6.5	1.5	1.138	£522.00
EH7110LST	700	1100	60	8.5	2.0	1.480	£537.00
EH7130LST	700	1300	70	8.5	2.0	1.900	£545.00

Battery Operated Controller - £81.67 + VAT Delivery - £28.00 + VAT per delivery

www.eliteheaters.co.uk

Tel. 01673 857050

Prices Effective from 1st March 2018