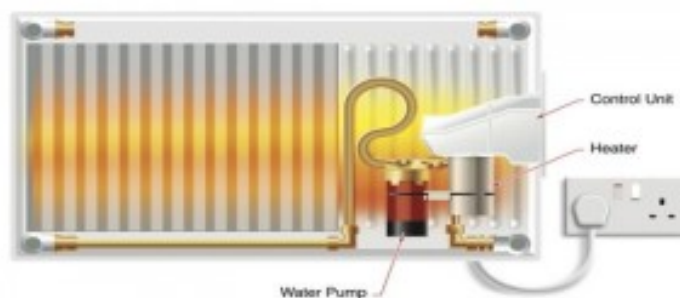


Quick Guide – 2018 Domestic Electric Heating Radiators

Independent Water Filled Electric Radiators

Standard Electric Traditional Style Domestic Heating Radiators

0.9 kW, 1.5 kW, 2.0 kW – 30 cm, 40 cm & 60 cm Versions



- UK Made, Innovative Premium Grade Electric Heating – the water inside the factory pre filled electric radiator is heated and circulated around the radiator unit. The radiator emits a combination of radiant and convected heat, which heats the whole room without any dryness or stuffiness to create a very comfortable and healthy atmosphere, just like a familiar boiler fed ‘wet central heating system’ radiator. Because water is so quick to heat up, your room will feel warmer much quicker than if you had oil filled heaters or storage heaters.
- Controllable heating, just like the familiar ‘wet system’ radiator, but no gas or oil boiler, pumps or pipework to maintain ! The built in air sensing thermostat intelligently senses the room temperature and responds to the heating demand. Easy install, high quality heating, no annoying too hot / too cold cycle. Mount the wall brackets and hook on the radiator. Plug in individual radiators, or spur wire larger installations

RFC’ Digital Control radiator versions are registered on installation to a particular battery operated RFC controller, which is purchased separately. You can separate the rooms or floor levels, and control them differently. Each RFC controller can control either just one, or a ‘group’ of radiators together for the same heating temperatures and timings

<https://www.eliteheaters.co.uk/radiators/independent-water-filled/>

PLE Electric Panel Radiators - Integrated Electronic Timer

'Standard Type' Domestic Electric Panel Heating

0.5 kW, 0.75 kW, 1.0 kW, 1.25 kW, 1.5 kW, 2.0 kW



The PLE Series panel heaters feature an electronic timer which offers a 7-day programme with 6 heating periods per day. The digital control panel has an easy-to-read display and four large control buttons with audible and tactile feedback. Easy to operate and designed with an electronic lock to prevent tampering with controls. Features open window detection which recognises a sudden temperature drop when a window is opened and turns the heating off to save energy. Once the window is closed, the temperature change triggers the heating to resume its normal operation

- Large Choice of Electric Panel Radiators
- UK Manufactured. Colour Choices – Standard White or Premium Stainless Steel (SS) Finish
- PLE Series – with Integrated Electronic Control or consider the PRX Series – RX Wireless Remote Control (use with the Battery or Mains Control Panel)

<https://www.eliteheaters.co.uk/radiators/panel-heating/>

Electric 'Water Filled' LST Radiators

0.9 kW EH 7050, 0.9 kW EH 7070, 1.5 kW EH 7100, 2.0 kW EH 7110,
2.0 kW 7130

All EH radiators are 70 cm High, including the LST Cover



- UK Made, Innovative Premium Grade Electric Low Surface Temperature Heating – the water inside the factory pre filled electric radiator is heated and circulated around the radiator unit. The radiator emits a combination of radiant and convected heat, which heats the whole room without any dryness or stuffiness to create a very comfortable and healthy atmosphere, just like a familiar boiler fed 'wet central heating system' radiator. Because water is so quick to heat up, your room will feel warmer much quicker than if you had oil filled heaters or storage heaters.
- Controllable heating, just like the familiar 'wet system' radiator, but no gas or oil boiler, pumps or pipework to maintain ! The built in air sensing thermostat intelligently senses the room temperature and responds to the heating demand. Easy install, high quality heating, no annoying too hot / too cold cycle.

You can separate the rooms or floor levels, and control them differently.

Each RFC controller can control either just one, or a 'group' of radiators together for the same heating temperatures and timings

<https://www.eliteheaters.co.uk/radiators/low-surface-temperature/>

Low Surface Temperature Panel Heaters

- Maximum surface temperature of 43°C to comply with NHS Estates Health Guidance Notes.
- No Fan - Available in 0.5 kW and 0.8 kW



LSTE panel heaters feature an electronic timer which offers a 7-day programme with 6 heating periods per day. The digital control panel has an easy-to-read display and four large control buttons with audible and tactile feedback. Easy to operate and designed with an electronic lock to prevent tampering with controls. Features open window detection which recognizes a sudden temperature drop when a window is opened and turns the heating off to save energy. Once the window is closed, the temperature change triggers the heating to resume its normal operation. They are perfect for environments with vulnerable people such as children and elderly residents; and therefore ideal for schools, nurseries, retirement homes, hospitals and anywhere where safety is paramount.

- Non Fan Radiators, very suitable for heating smaller spaces to approx 20m³, Kitchens, Bathrooms etc. Maximum surface temperature of 43°C to comply with Health Guidance Notes

<https://www.eliteheaters.co.uk/radiators/low-surface-temperature/>

Electric 'Water Filled' LST Radiators

Low Surface Temperature Electric Radiators - 0.9 kW EH 7050, 0.9 kW EH 7070, 1.5 kW EH 7100, 2.0 kW EH 7110, 2.0 kW 7130

All EH radiators are 70 cm High, including the LST Cover



- UK Made, Innovative Premium Grade Electric Heating – the water inside the factory pre filled electric radiator is heated and circulated around the radiator unit. The radiator emits a combination of radiant and convected heat, which heats the whole room without any dryness or stuffiness to create a very comfortable and healthy atmosphere, just like a familiar boiler fed 'wet central heating system' radiator. Because water is so quick to heat up, your room will feel warmer much quicker than if you had oil filled heaters or storage heaters.
- Controllable heating, just like the familiar 'wet system' radiator, but no gas or oil boiler, pumps or pipework to maintain ! The built in air sensing thermostat intelligently senses the room temperature and responds to the heating demand. Easy install, high quality heating, no annoying too hot / too cold cycle.

You can separate the rooms or floor levels, and control them differently. Each RFC controller can control either just one, or a 'group' of radiators together for the same heating temperatures and timings

<https://www.eliteheaters.co.uk/radiators/low-surface-temperature/>

PLSTiE - Low Surface Temperature Fan Assisted Radiators

Maximum surface temperature of 43°C to comply with NHS Estates Health Guidance Notes. Available in 1 kW and 1.5 kW, Fan Assisted with Intelligent Fan Control and Electronic 7-Day Timer. Quiet operation of 34 dba



The PLSTiE low surface temperature wall mounted fan heaters are very slim and contemporary in design. They feature an electronic timer which offers a 7-day programme with 6 heating periods per day. The digital control panel has an easy-to-read display and four large control buttons with audible and tactile feedback. Features open window detection which recognizes a sudden temperature drop when a window is opened and turns the heating off to save energy. Once the window is closed, the temperature change triggers the heating to resume its normal operation. The intelligent fan control optimises fan speed and heat output to quickly achieve and control a comfort temperature whilst maintaining a very low noise level.

<https://www.eliteheaters.co.uk/radiators/low-surface-temperature/>

Assistance & Quotations - Telephone – Andrew - 07775 601692 (best)

e mail info@eliteheaters.co.uk website <https://www.eliteheaters.co.uk/>